

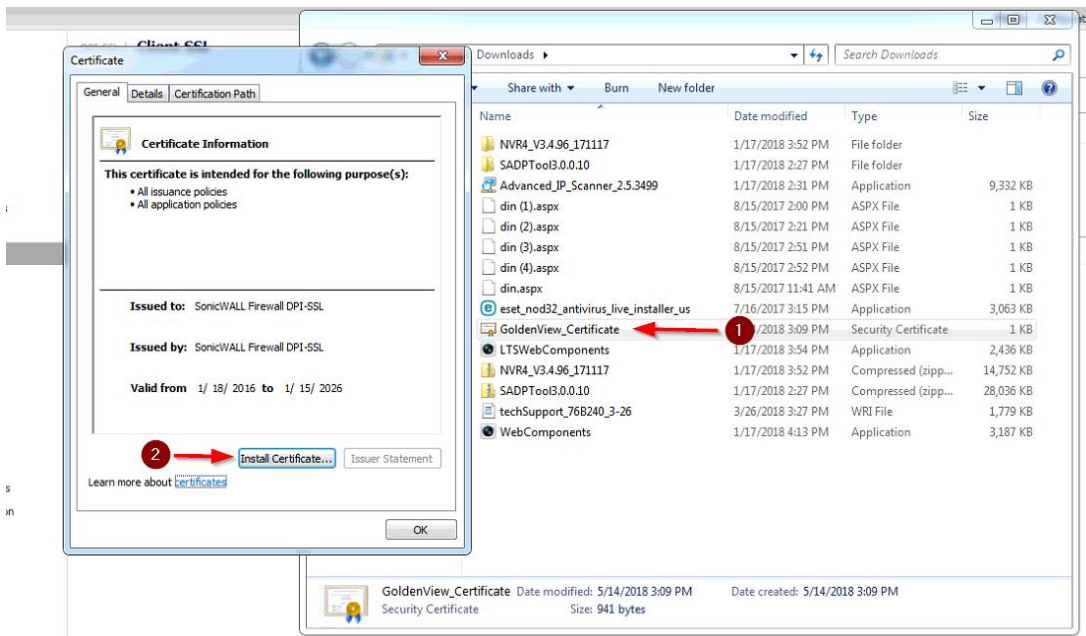
How to Install a Firewall Certificate

1. Open your web browser to <http://www.tritechinc.biz/colonytools/certs> (shown below)
2. Select which certificate is for your colony by clicking on it and saving it to your local computer.

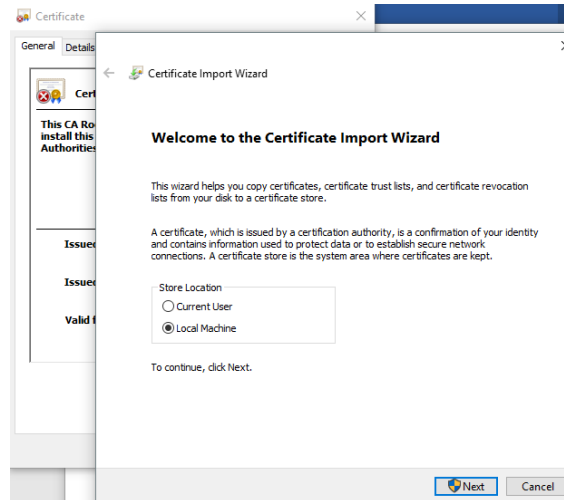
Index of /colonytools/certs

Name	Last modified	Size	De
Parent Directory		-	
Bonhomme Certificate..>	2018-05-15 23:56	941	
Collins Certificate.cer	2018-05-15 23:56	941	
GoldenView Certifica..>	2018-05-15 23:56	941	
Oaklane Certificate.cer	2018-05-15 23:56	941	
Platte Certificate.cer	2018-05-15 23:56	941	
Upland Certificate.cer	2018-05-18 14:13	941	

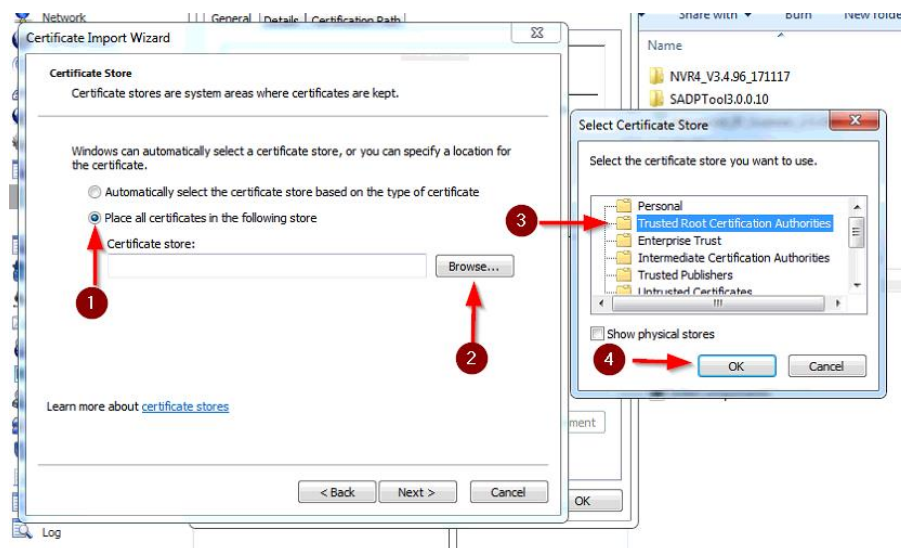
3. Once downloaded, double click certificate to start the install.
4. When it opens the dialog, click “Install Certificate...” (shown below)



- When you click on the “Install Certificate”, the following prompt comes up, select “local machine” and click “Next”



- You will be prompted for elevated permissions, click ‘Yes’
- The next dialog that comes up, click (1) ‘Place all certificates in the following store’ then, click (2) “Browse” and select the (3) “Trusted Root Certification Authorities”, click “Ok” and lastly click “Next” (1, 2 and 3 are shown below)



- You will then click “Finish”.

← Certificate Import Wizard

Completing the Certificate Import Wizard

The certificate will be imported after you click Finish.

You have specified the following settings:

Certificate Store Selected by User	Trusted Root Certification Authorities
Content	Certificate

Finish Cancel

9. If you get prompted for elevated permissions, click 'Yes'.
10. You will then see the "The import was successful" prompt. Click "Ok" and "Ok" to complete the installation.

